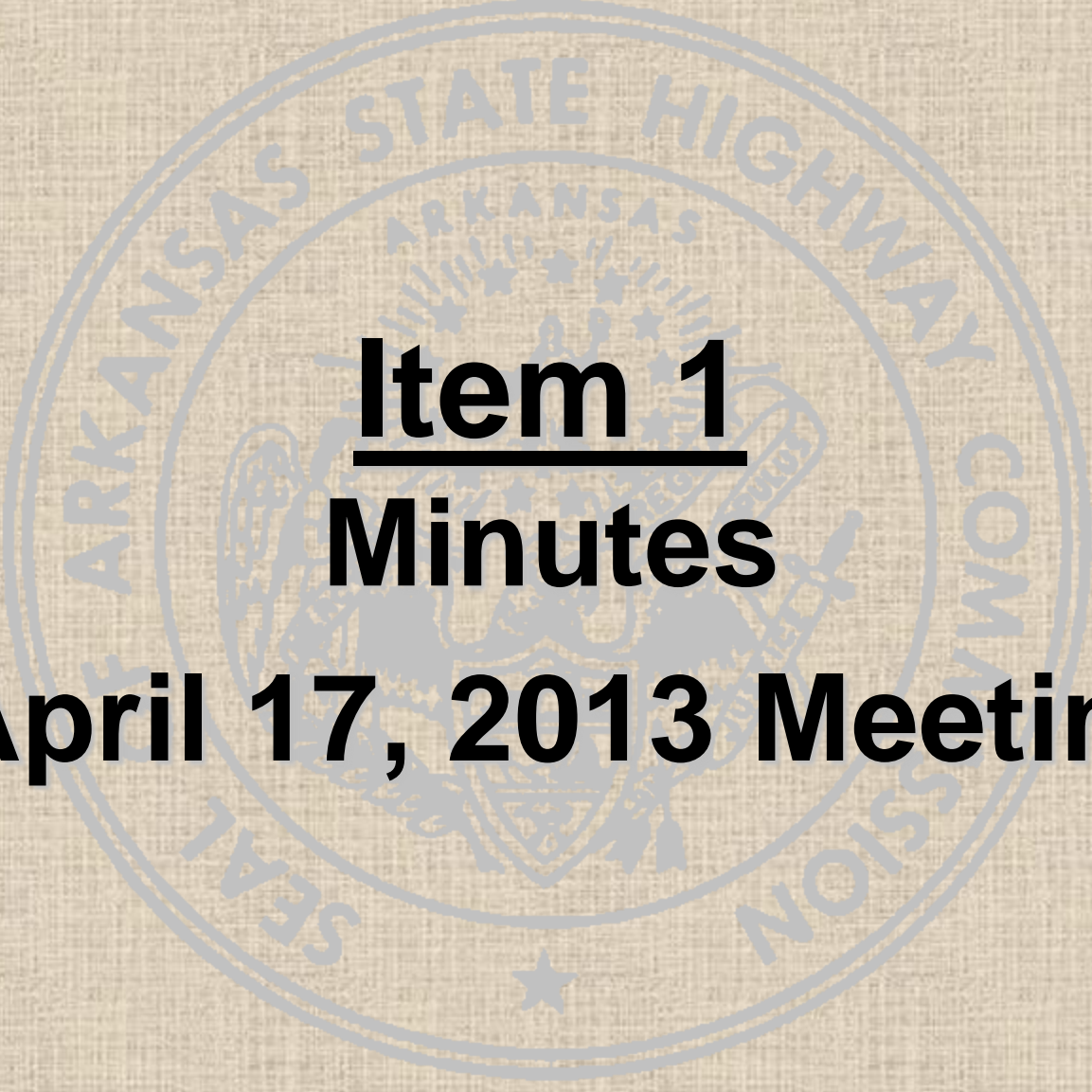


The background features a large, faint, circular seal of the Arkansas State Highway Commission. The seal contains the text "ARKANSAS STATE HIGHWAY COMMISSION" around the perimeter and a central emblem with a star and other symbols.

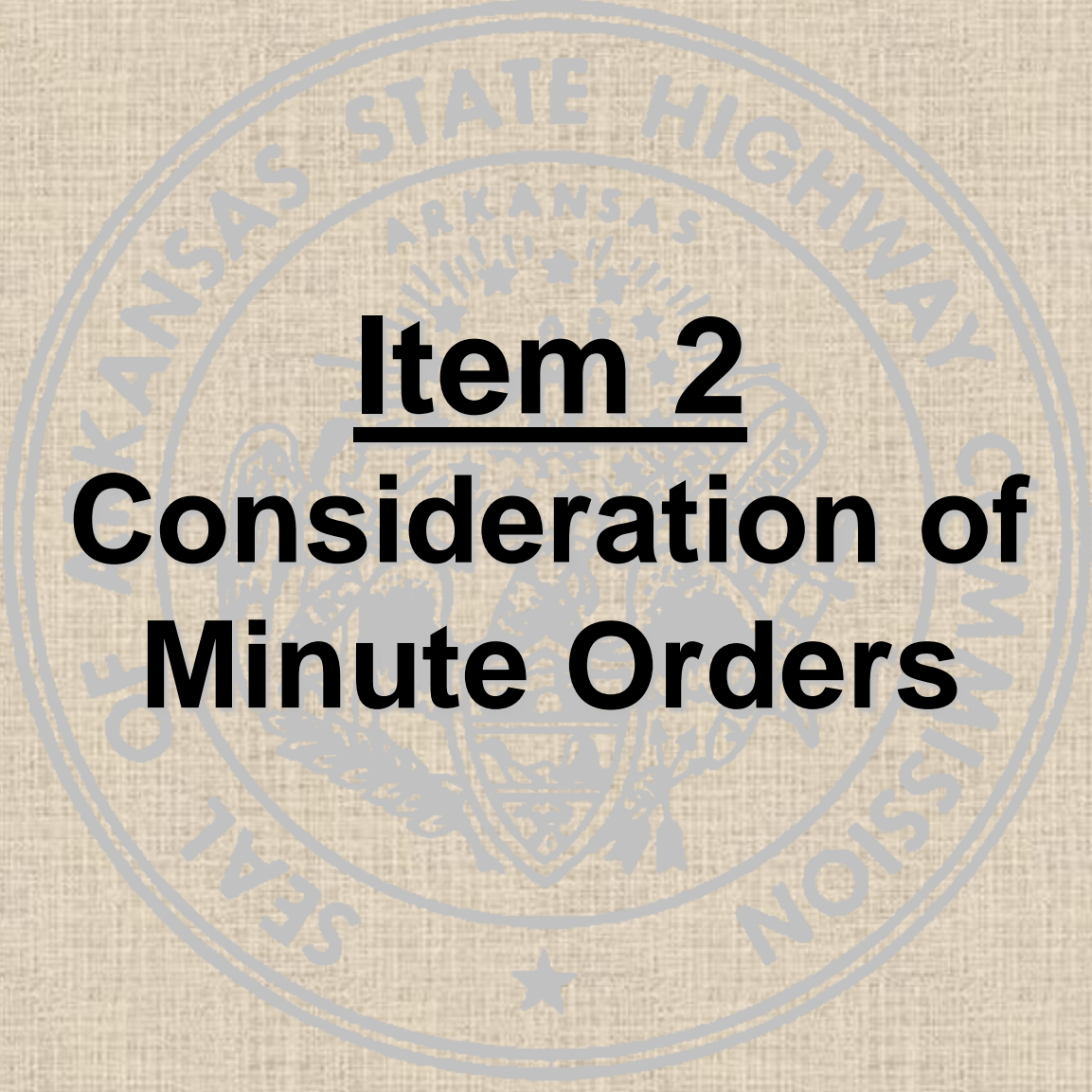
Arkansas State Highway Commission Meeting

Wednesday, June 5, 2013

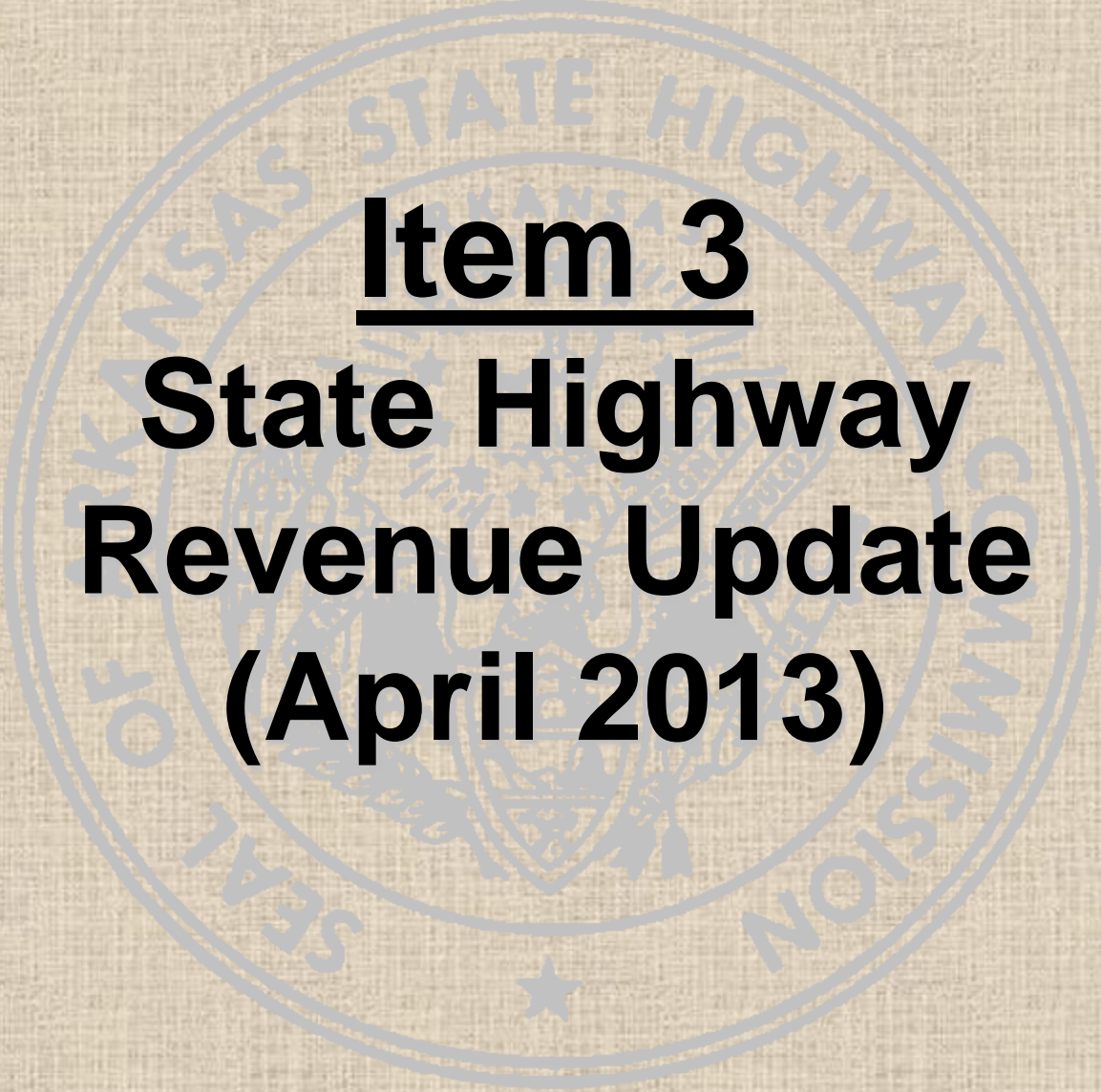
The background features a large, faint, circular seal of the Arkansas State Highway Commission. The seal contains the text "ARKANSAS STATE HIGHWAY COMMISSION" around the perimeter and "SEAL" at the bottom. In the center of the seal is the state seal of Arkansas, which includes a plow, a sheaf of wheat, and a cotton plant, with the word "AGRICULTURE" above and "COMMERCE" below. The year "1836" is also visible.

Item 1
Minutes

April 17, 2013 Meeting

The background features a large, faint, circular seal of the Arkansas State Highway Commission. The seal contains the text "ARKANSAS STATE HIGHWAY COMMISSION" around the perimeter and a central emblem with a star and the word "ARKANSAS".

Item 2
**Consideration of
Minute Orders**

The background features a large, faint, circular seal of the Kansas State Highway Commission. The seal contains the text "KANSAS STATE HIGHWAY COMMISSION" around the perimeter and a central emblem with a star.

Item 3
**State Highway
Revenue Update
(April 2013)**

Revenues and Consumption

April 2013

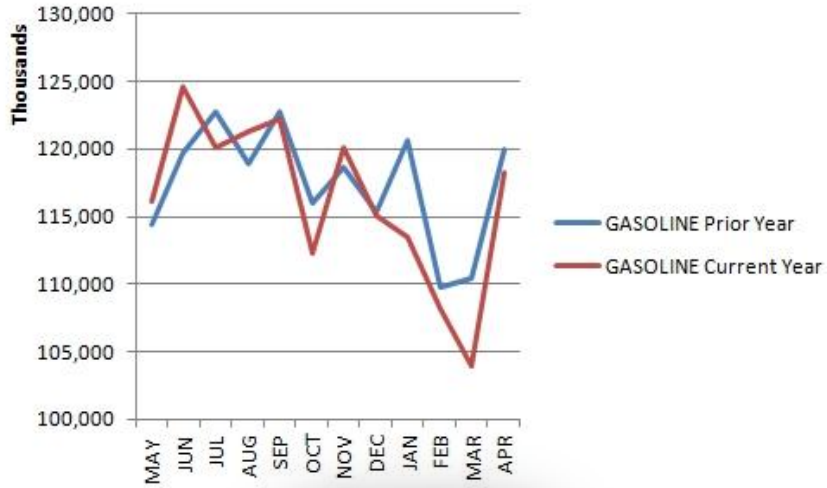
REVENUES					
Comparison of AHTD State Revenues by Fiscal Year					
		FY 2012	FY 2013	Variance	Percent
July - April		(Millions)	(Millions)	(Millions)	Change
	Motor Fuel Taxes	\$238.1	\$225.0	(\$13.1)	-5.5%
	Registration Fees	\$69.6	\$66.6	(\$3.0)	-4.3%
	Permits & Penalties	\$16.7	\$15.1	(\$1.6)	-9.6%
	Other	\$4.5	\$6.5	\$2.0	44.4%
	Total User Revenues	\$328.9	\$313.2	(\$15.7)	-4.8%
	Natural Gas Severance Tax	\$30.1	\$25.4	(\$4.7)	-15.6%
	RRA Interest	\$2.7	\$2.7	\$0.0	0.0%
	Less: Diesel Tax for Bonds	(\$14.0)	(\$13.6)	\$0.4	-2.9%
	Total Revenues Available	\$347.7	\$327.7	(\$20.0)	-5.8%

Fiscal Year 2012 Budget vs. Actual					
		Budget	Actual	Variance	Percent
July - April		(Millions)	(Millions)	(Millions)	Variance
	Motor Fuel Taxes	\$229.9	\$225.0	(\$4.9)	-2.1%
	Registration Fees	\$65.8	\$66.6	\$0.8	1.2%
	Permits & Penalties	\$16.4	\$15.1	(\$1.3)	-7.9%
	Other	\$4.6	\$6.5	\$1.9	41.3%
	Total User Revenues	\$316.7	\$313.2	(\$3.5)	-1.1%
	Natural Gas Severance Tax	\$21.1	\$25.4	\$4.3	20.4%
	RRA Interest	\$2.0	\$2.7	\$0.7	35.0%
	Less: Diesel Tax for Bonds	(\$14.3)	(\$13.6)	\$0.7	-4.9%
	Total Revenues Available	\$325.5	\$327.7	\$2.2	0.7%

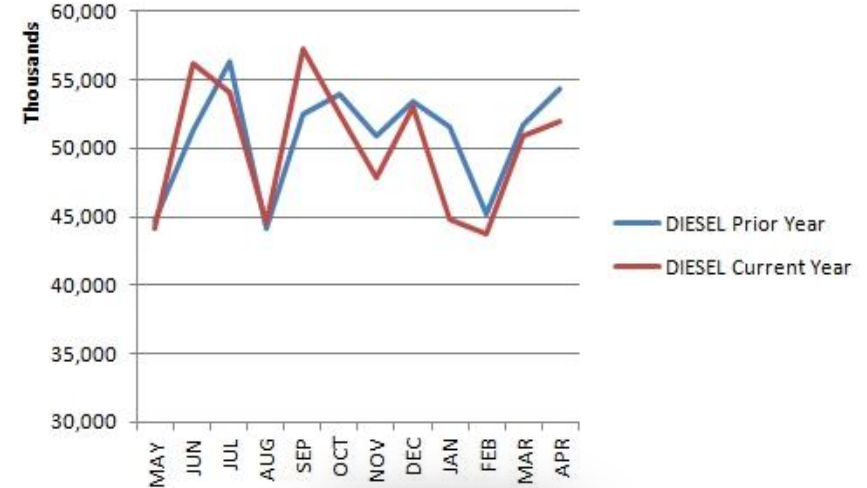
CONSUMPTION					
Taxable Motor Fuel Gallons Reported					
		FY 2012	FY 2013	Difference	Percent
July - April		(Millions)	(Millions)	(Millions)	Change
	Gasoline	1,175.4	1,154.9	-20.5	-1.7%
	Diesel	513.7	500.5	-13.2	-2.6%
	Total	1,689.1	1,655.4	-33.7	-2.0%

Fuel Consumption

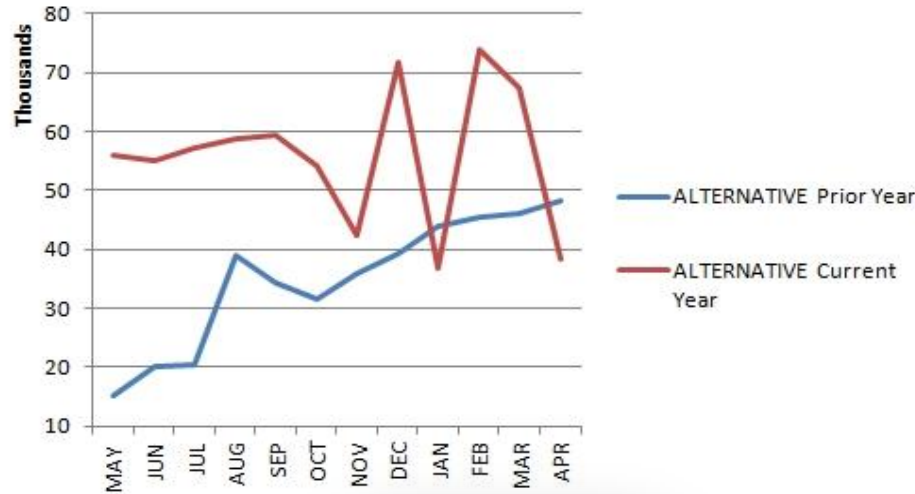
May 2012 - April 2013



Gasoline



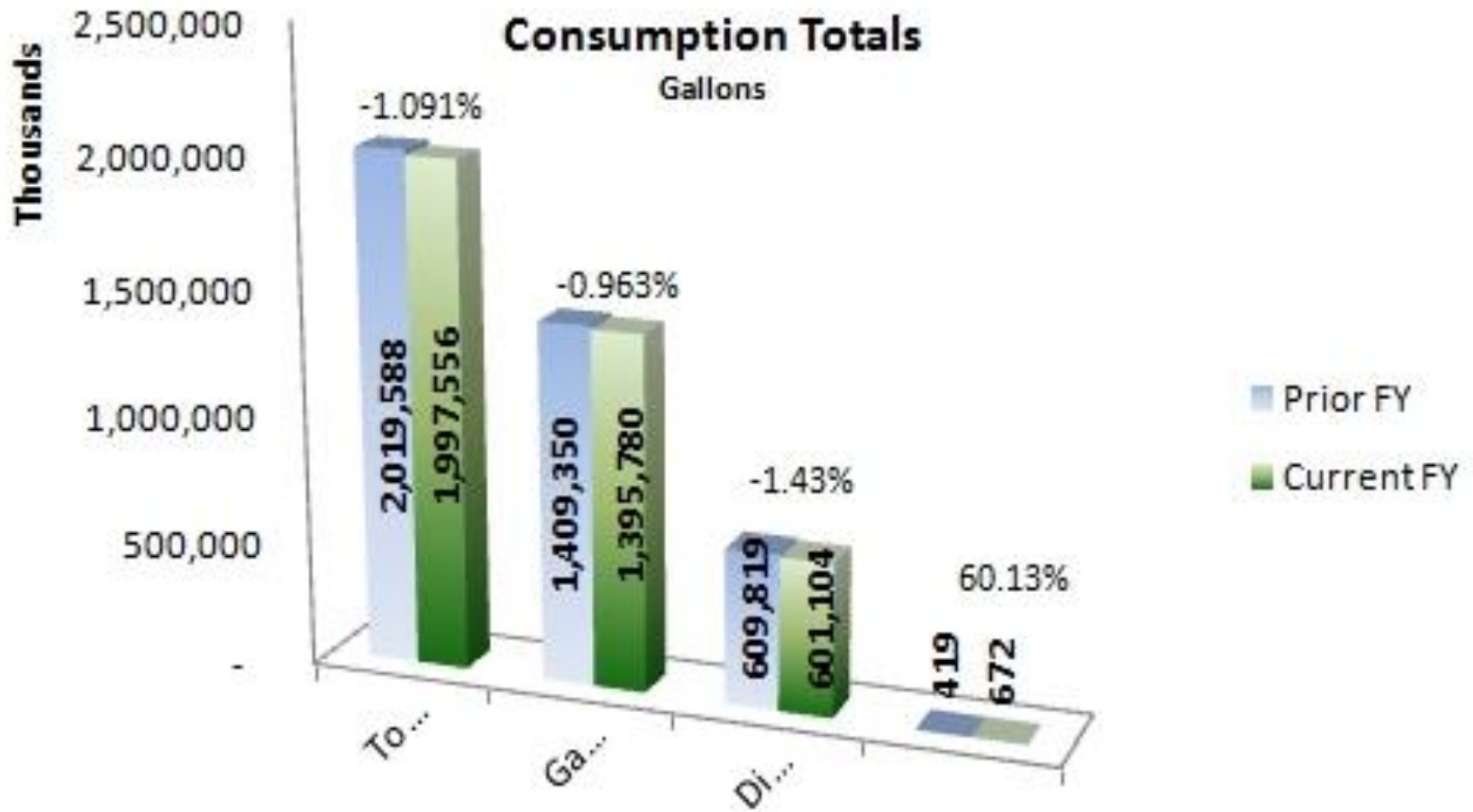
Diesel



Alternative

Fuel Consumption

Gallons



The background features a large, faint, circular seal of the Arkansas State Highway Commission. The seal contains the text "ARKANSAS STATE HIGHWAY COMMISSION" around the perimeter and "ARKANSAS" in the center. In the center of the seal is a smaller emblem with a star and the date "1836".

Item 4

Status of Federal Highway and Transit Funding Issues



Federal Transportation Legislation

- **Moving Ahead for Progress in the 21st Century (MAP-21)**
 - Signed by the President July 6, 2012
 - Expires September 30, 2014 (approximately 16 months)
 - Reauthorization Discussions Underway



“MAP-21 is a five-year policy bill with two years of funding.”



AASHTO'S REAUTHORIZATION STRATEGY

- **Engagement:** State DOT leaders to educate Congressional members and staff on value of federal investment
- **Support:** Assiduously help Congressional committees to get their job done and provide political comfort for members
- **Flexibility:** “All options are on the table”: Remain agile to take advantage of window of opportunity



Status of Congressional Debate on Transportation Investment

THE CHALLENGES

- No earmarks
- Increased partisanship
- Constant battles on debt and deficit, budget, appropriations
- Re-examination of the federal role and interest
- Lack of public understanding on transportation issue
- And of course, lack of money

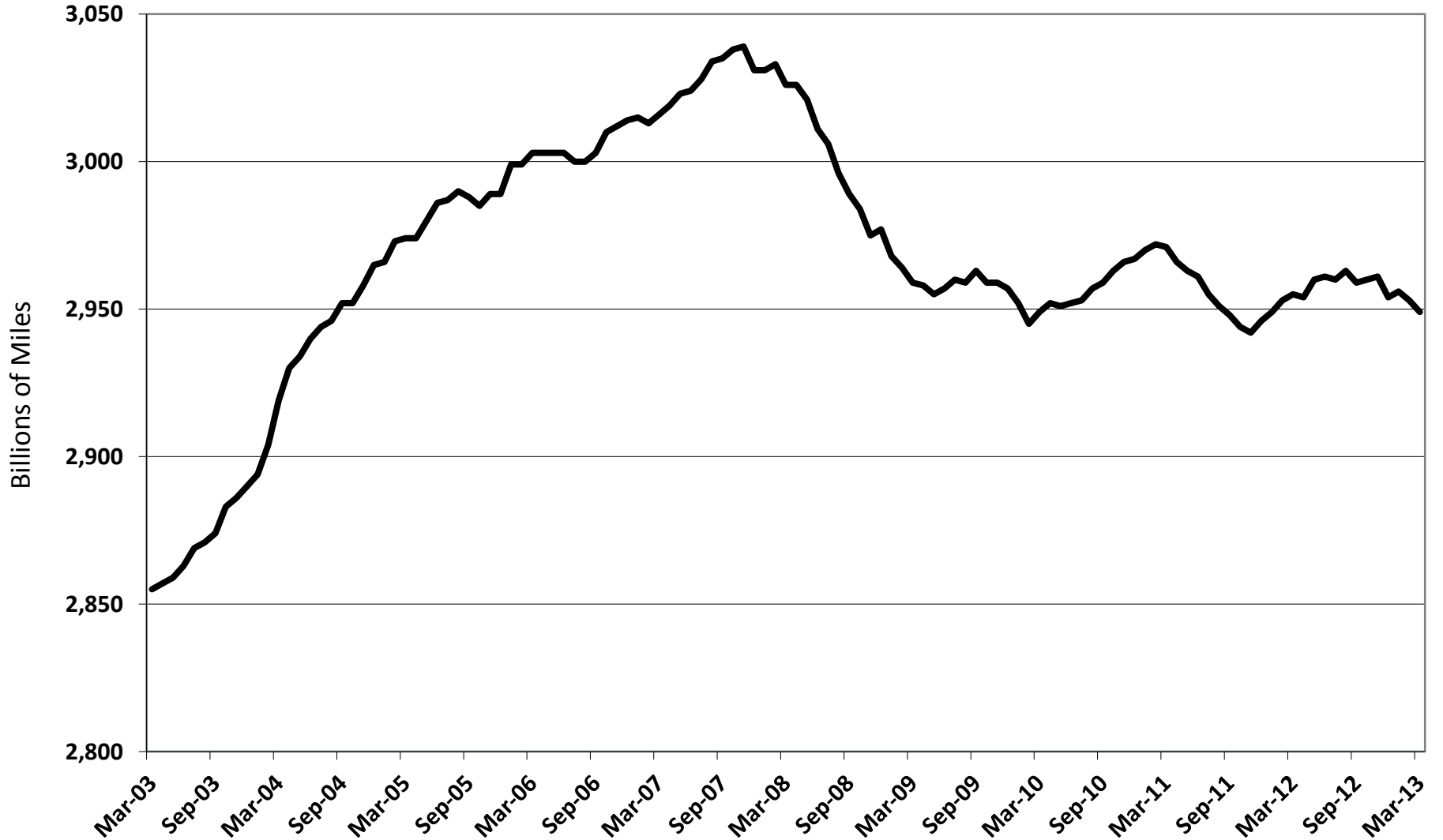


Highway Trust Fund

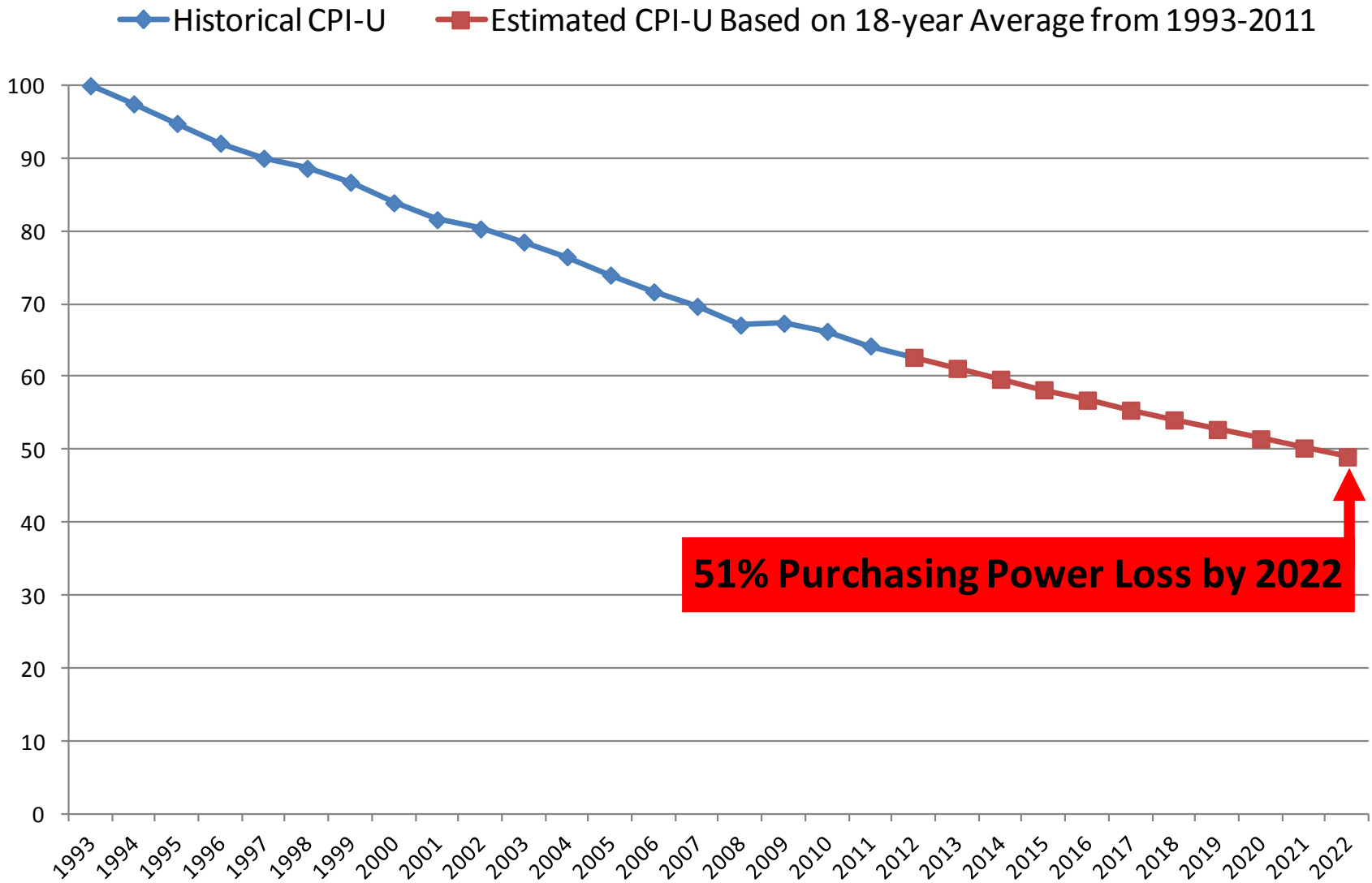
Year	Amount (x \$1 Billion)	From Account
2008	\$ 8.0	General Fund
2009	\$ 7.0	General Fund
2010	\$19.5	General Fund
2012	\$ 2.4	Leaking Underground Storage Tank Trust Fund
2013	\$ 6.2	General Fund
2014	\$12.6	General Fund
Grand Total	\$55.7	

Vehicle Miles Traveled - Mar 2003 to Mar 2013

(Moving 12 Month Total)

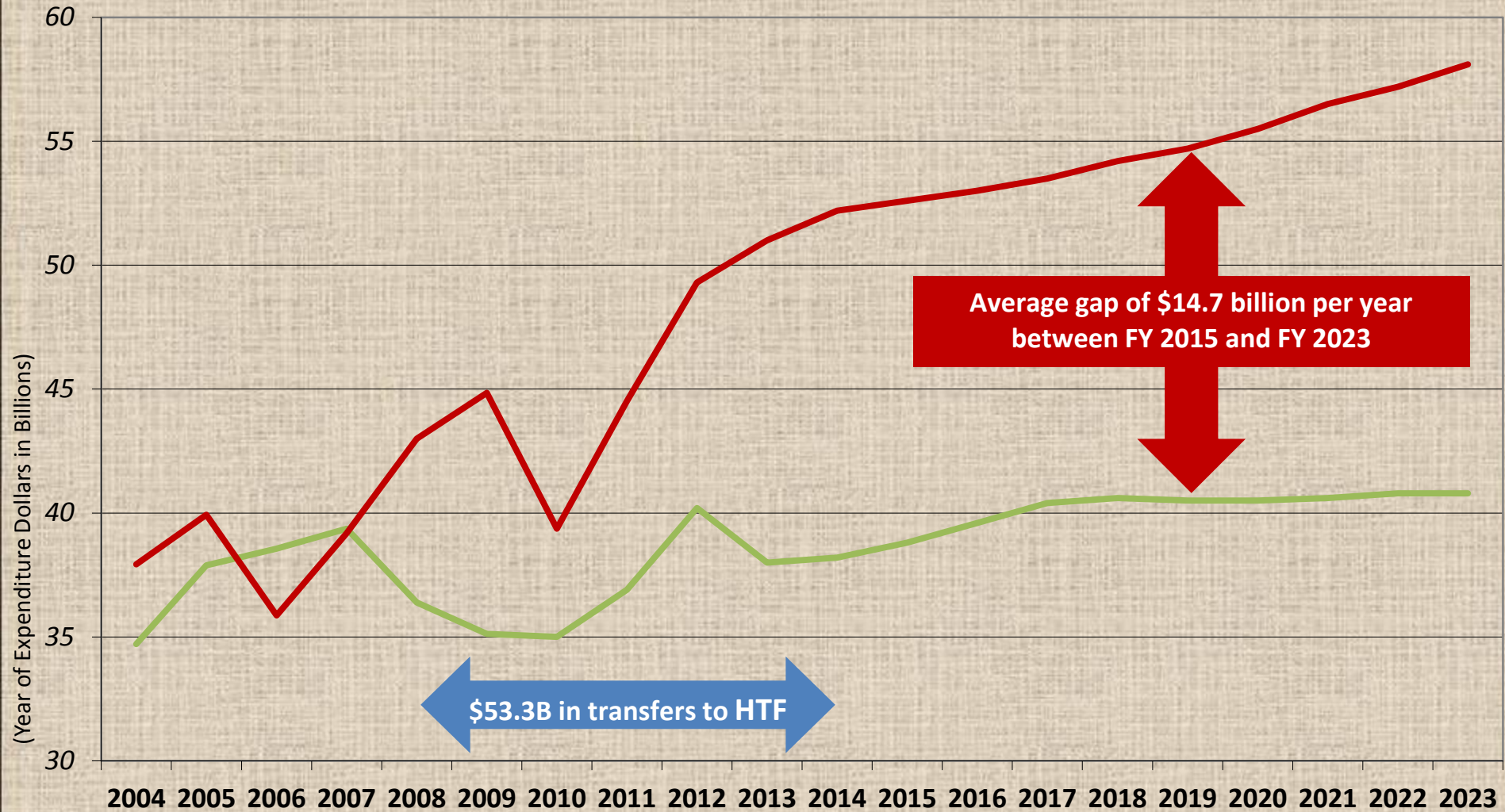


PURCHASING POWER LOSS OF GAS TAX DUE TO INFLATION



Highway Trust Fund Receipts and Outlays Discrepancy

— Receipts — Outlays



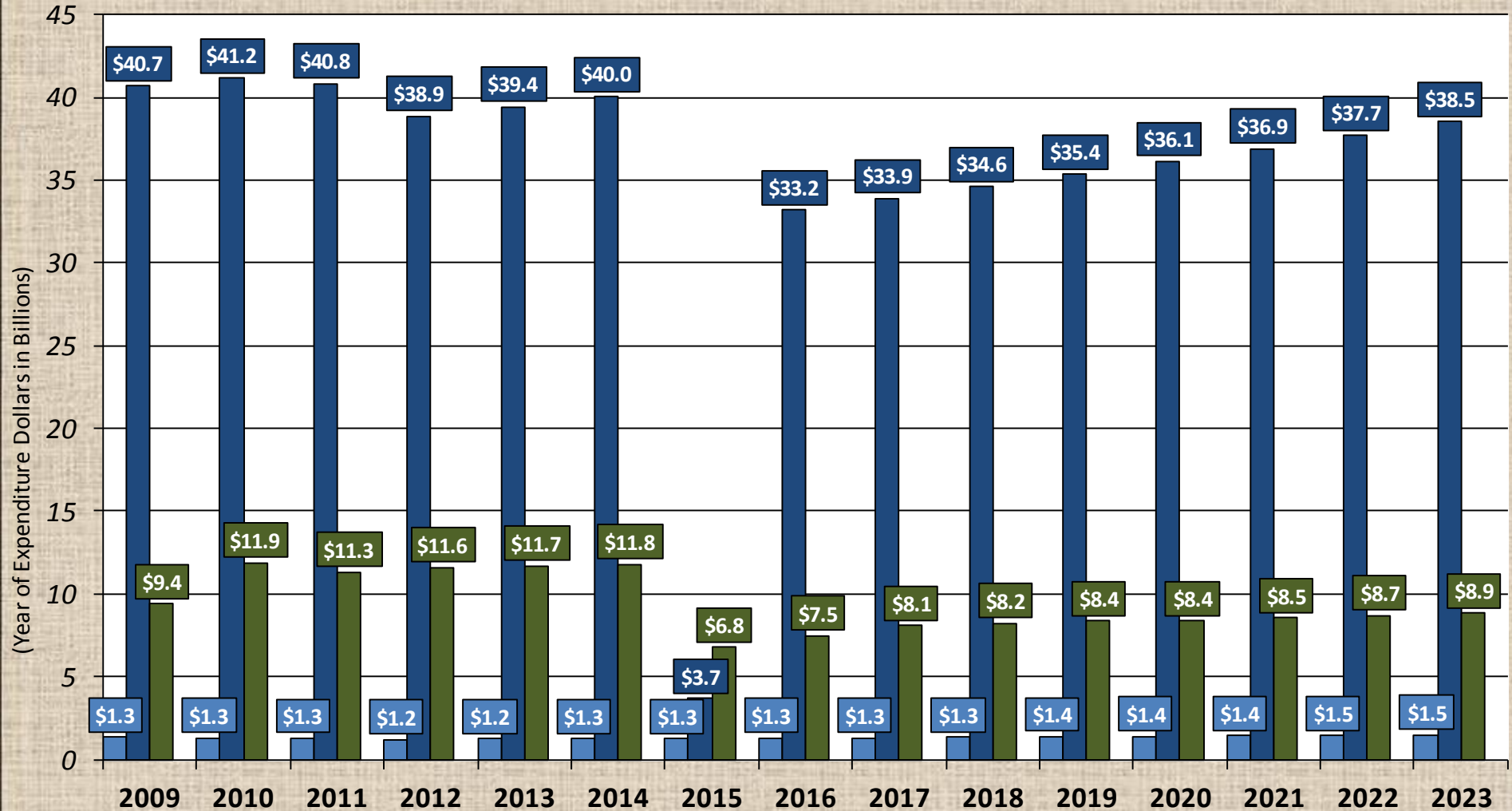
Excludes \$8.017 billion transfer from General Fund to Highway Account of HTF in September 2008; \$7 billion transfer from General Fund to Highway Account of HTF in August 2009; \$19.5 billion transfer from General Fund to Highway and Mass Transit Accounts of HTF in March 2010; \$2.4 billion transfer from Leaking Underground Storage Tank Trust Fund to HTF in July 2012; \$6.2 billion transfer from General Fund to Highway Account of HTF in FY 2013; \$10.4 billion transfer from General Fund to Highway Account of HTF in FY 2014; \$2.2 billion transfer from General Fund to Mass Transit Account of HTF in FY 2014.

ESTIMATED PROGRAM FUNDING LEVEL WITH NO NET NEW REVENUES TO HTF

Federal Highway and Transit Obligations Through 2023

Assumes a minimum balance of \$2 billion for the Highway Account and \$.5 billion for the Mass Transit Account

Highway Safety Federal-aid Highway Transit



The background features a large, faint, circular seal of the Arkansas State Highway Commission. The seal contains the text "ARKANSAS STATE HIGHWAY COMMISSION" around the perimeter and "SEAL" at the bottom. In the center of the seal is the state seal of Arkansas, which includes a shield with a plow, a sheaf of wheat, and a cotton plant, topped by a crest with a star and the date "1836".

Item 5

**Proposed Revisions to
Restore Sign Visibility Policy**

Restore Sign Visibility Policy



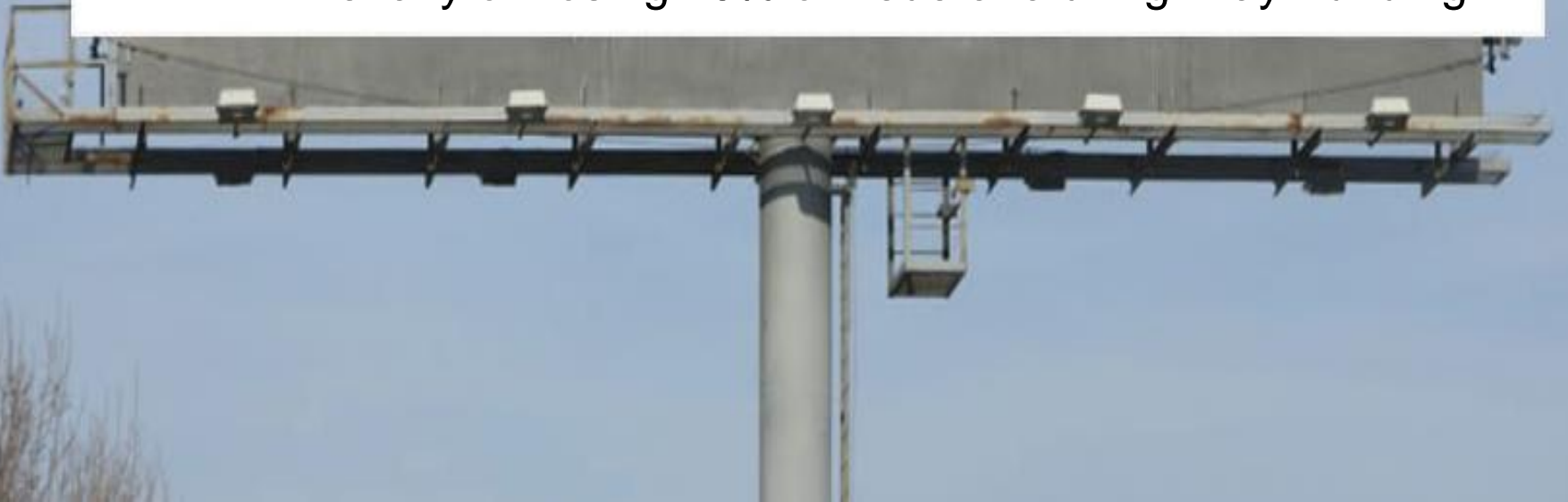
Restore Sign Visibility Policy



Restore Sign Visibility Policy

➤ **1965** – Congress Enacted the “Highway Beautification Act”

- Limit Spread of Billboards and Junkyards along the Interstates and Federal Primary Highway System (NHS)
- Each State Must Enforce
- Penalty of Losing 10% of Federal-aid Highway Funding



Restore Sign Visibility Policy

- **1965** – Congress Enacted the “Highway Beautification Act.”
- **1967** – Arkansas General Assembly Enacted “Act 640”
 - Highway Commission Must Establish and Enforce Billboard Regulations Consistent with Federal Requirements



Restore Sign Visibility Policy

- **1965** – Congress Enacted the “Highway Beautification Act”
- **1967** – Arkansas General Assembly Enacted “Act 640”
- **1972** – State Permits Required
for Billboards and Off-Premise Signs



Restore Sign Visibility Policy

➤ **Conforming Permits (Class A)**

Commercial or Industrial Areas

➤ **Non-Conforming Permits (Class B)**

- NOT in Commercial or Industrial Areas
- “Grandfathered In”
- Disappear by Attrition
- Replacement signs could not be erected unless land developed.



Restore Sign Visibility Policy

➤ **1975** – Law Changed

- Signs Beyond 660 feet
- State Scenic Byways



Restore Sign Visibility Policy

➤ **Original Regulations - Vegetation Control Not Allowed**



Restore Sign Visibility Policy

- **Original Regulations - Vegetation Control Not Allowed**
- **1995 – Sign Effectiveness Enhancement Policy (SEE)**



Restore Sign Visibility Policy

- **Original Regulations - Vegetation Control Not Allowed**
- **1995 – Sign Effectiveness Enhancement Policy (SEE)**
- **2000 – Restore Sign Visibility Policy (RSVP)**
- **2006 – Current RSVP Adopted**



Restore Sign Visibility Policy

- **2010** – Violation of RSVP Permit – Requires Forfeit of Billboard Permit and Removal of Sign



GREAT CAREERS
LAST A LIFETIME.



TRAINING
FOR ONE
DOESN'T
HAVE TO.



SEAN CURRAN
sean@cti.edu

020002 © OneChannel







YellowWood
Tough on Hot, Dry & Termites
BEST PIZZA DRIVE IN INDIA



50-6045

EXIT 20
Dyer
1 MILE

Explore
Main Street Van Buren
EXIT 7 TO ELECTRIC COWBOY EXIT 11





067532

CLEAR CHANNEL











007532
007532
CLEAR CHANNEL



head
13

067532

 CLEAR CHANNEL



YellaWood
THE END OF LOGWOOD
Clarksville
Exit 58
Enter at McDonald's



Restore Sign Visibility Policy

- **2010** – Violation of RSVP Permit – Requires Forfeit of Billboard Permit and Removal of Sign
- **2011** – RSVP Revisions Began



Restore Sign Visibility Policy

- **2010** – Violation of RSVP Permit – Requires Forfeit of Billboard Permit and Removal of Sign
- **2011** – RSVP Revisions Began
- **2013** – Public Hearing and Public Comment Period



BILLBOARD INDUSTRY *CONCERNS*



BILLBOARD INDUSTRY CONCERNS

- Opposes provision to deny RSVP applications if applicant has illegal/abandoned signs.



BILLBOARD INDUSTRY CONCERNS

- Opposes provision to deny RSVP applications if applicant has illegal/abandoned signs.
- Opposes losing sign as penalty. Prefer \$1,000 fine.



BILLBOARD INDUSTRY CONCERNS

- Opposes provision to deny RSVP applications if applicant has illegal/abandoned signs.
- Opposes losing sign as penalty. Prefer \$1,000 fine.
- Opposes provision that requires written permission from adjacent landowner before mowing in front of their property.



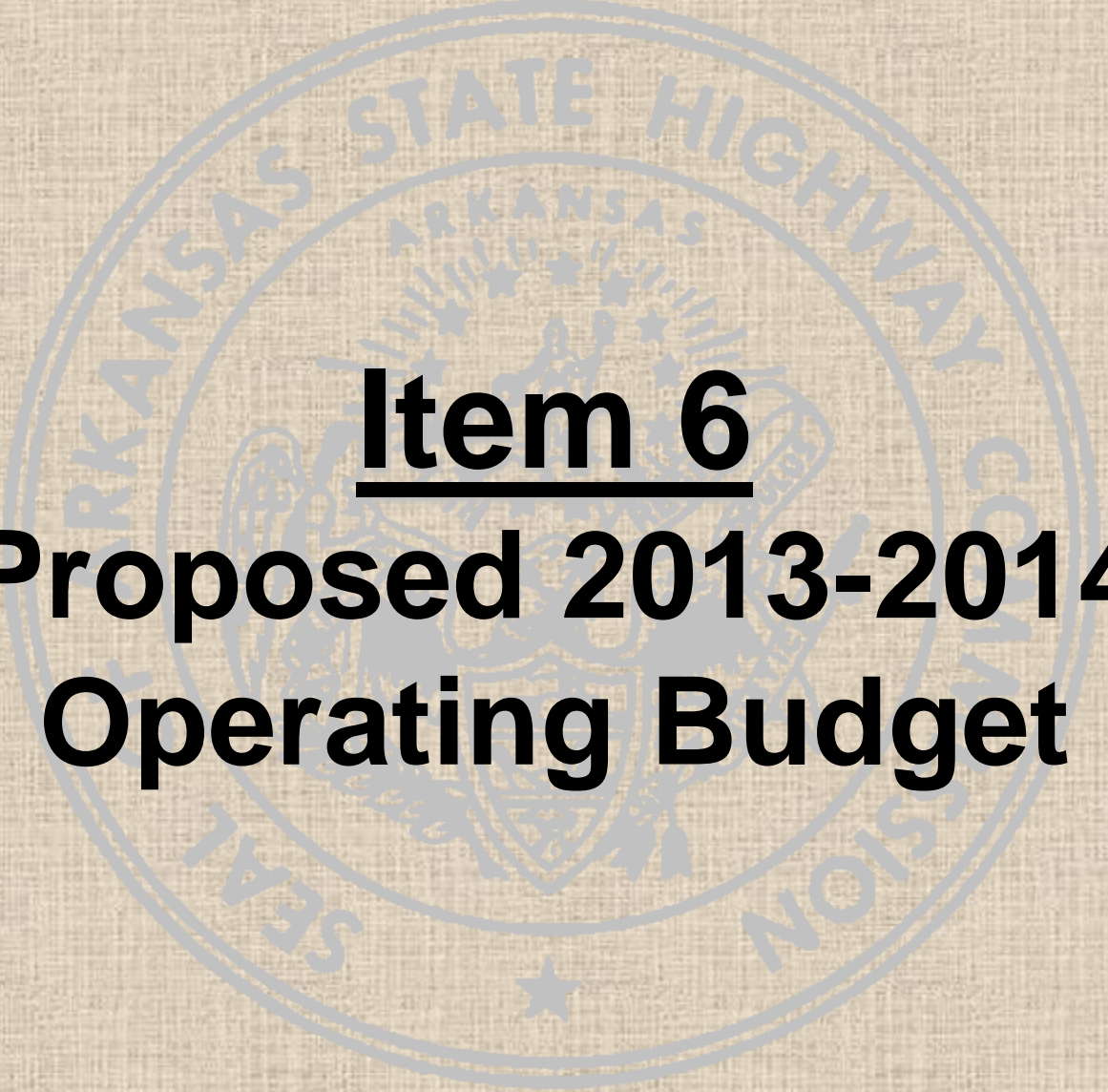
BILLBOARD INDUSTRY CONCERNS

- Opposes provision to deny RSVP applications if applicant has illegal/abandoned signs.
- Opposes losing sign as penalty. Prefer \$1,000 fine.
- Opposes provision that requires written permission from adjacent landowner before mowing in front of their property.
- Opposes the requirement that a Non-Conforming sign be removed to mow in front of another Non-Conforming sign.



Restore Sign Visibility Policy



The background features a large, faint, circular seal of the Arkansas State Highway Commission. The seal contains the text "ARKANSAS STATE HIGHWAY COMMISSION" around the perimeter and "SEAL" at the bottom. In the center of the seal is the Arkansas state coat of arms, which includes a shield with a plow, a sheaf of wheat, and a cotton plant, topped by a crest with a star. The seal is set against a light-colored, textured background.

Item 6
Proposed 2013-2014
Operating Budget

2013-2014 Operating Budget

Item	Amount
2% Cost of Living Adjustment	\$2.6 million
Step Raises	\$600,000
Service Recognition Payments	\$1.7 million
District Expenses	7% increase
State Match for Health Insurance	\$700,000
State Aid Street Program	\$200,000
Equipment	\$2 million increase

The background of the slide features a large, faint, circular seal of the Arkansas State Highway and Transportation Commission. The seal contains the text "ARKANSAS STATE HIGHWAY" at the top and "COMMISSION" at the bottom. In the center of the seal is the state seal of Arkansas, which depicts a shield with a cotton plant, a ship, and a plow, surrounded by a wreath and a banner with the motto "THE GREAT SOUTHERN HOME".

Item 7

**Other Business and
Discussion**



Arkansas State Highway Commission Meeting

Wednesday, June 5, 2013